

**nutribullet.**  
**GO**



**User guide.**

# Important safeguards.

WHEN OPERATING YOUR NUTRIBULLET® GO, REMEMBER: SAFETY ALWAYS COMES FIRST

**Warning!** To avoid the risk of serious injury, carefully read all instructions before operating your NutriBullet® GO. When using any electrical appliance, basic safety precautions should always be observed, including the following important information.

## ! Save these instructions! • FOR HOUSEHOLD USE ONLY

READ ALL INSTRUCTIONS CAREFULLY AND THOROUGHLY BEFORE OPERATING.

### GENERAL SAFETY INFORMATION

- Close supervision is necessary when any appliance is used by or near children. Keep cup, base, to go lid, and charging cable out of reach of children. This appliance is not a toy. Do not allow children to play with it.
- Always cover the blades with the cup or blade cover when not in use.
- The NutriBullet® GO has sharp blades and moving parts and is NOT intended for use by children or persons with reduced physical, sensory, or mental capabilities, or who lack experience and knowledge of its safe operation. Such persons require close supervision and thorough instruction on its proper use and safe operation. Close supervision is necessary when any appliance is used by or near children. Children should be supervised to ensure that they do not play with the appliance.
- Do not incinerate this appliance even if it is severely damaged. The lithium-ion batteries can explode in a fire. Always properly recycle products powered by lithium-ion batteries.
- To protect against fire, electrical shock and injury to persons, do not immerse the motor base or cable in water or any other liquid.
- Turn off power when the appliance is not in use, before putting the cup on the base or taking it off the base, and before cleaning.

- Avoid contact with moving parts.
- Regularly inspect the charging cable and the appliance for any damage. **Do not operate appliance with a damaged cable, or if the appliance malfunctions or is dropped or damaged in any manner. Contact Customer Service for assistance at: 1 (800) 523-5993.**
- The use of attachments not recommended or sold by Capital Brands Distribution, LLC may cause fire, electric shock, or injury, and will void the limited warranty.
- Do not use this appliance for anything other than its intended use. Do not attempt to blend anything other than cool food or liquids intended for consumption. Misuse may cause injury.
- Do not let the charging cable touch hot surfaces or any extreme heat source, or become knotted, tangled, or frayed.
- **Use only with Listed/Certified ITE Power Supply or Listed Class 2 Power unit.**
- **Always make sure the cup is securely locked in place on the base before blending. The motor will not turn on unless the cup is fully locked in place. Do not attempt to remove the cup while the unit is in operation.**
- Make sure the unit is turned off after each use. Ensure power is off (no light is on), the motor has stopped, and the blades have completely stopped moving before taking off cup or storing unit.
- Do not exceed the MAX Fill Line with solid or liquid ingredients before blending. Doing so can result in leakage. Do not place hand or fingers inside the cup when attaching cup to motor base, and always keep hands and fingers away from the blade assembly.
- Blades may stop turning during usage if the cup is overfilled. If this occurs, completely turn off the unit by pressing the Power Button. Ensure that all moving parts have come to a complete stop, then invert the cup/blade/base assembly, detach the cup from the base, and remove excess food from the cup. Ensure remaining ingredients do not exceed the MAX Fill Line before reattaching the cup to the motor base and resuming blending.
- **We recommend running the unit for 30 seconds or less. DO NOT OPERATE unit for MORE THAN ONE MINUTE.**

- Do not use this appliance if any parts appear to be damaged.
- Do not modify the charging cord in any way. Do not use cord if it shows signs of fraying or other damage.

## BLADE SAFETY

- Blades are sharp. Handle carefully.
- **NEVER OPERATE THE UNIT WITHOUT FIRST ATTACHING THE CUP.**
- To reduce the risk of personal injury or damage to the device, keep hands and utensils away from the cutting blade.
- Never blend carbonated beverages. Built-up pressure from released gases can cause container to burst, resulting in possible injury.
- Do not put hot liquids in the blending vessel. Use cool or room-temperature ingredients. Heated ingredients can create internal pressure in a sealed blending vessel, which may erupt upon opening and cause thermal injury.
- **CAUTION!** Friction from the rotating blade can cause ingredients to heat and generate internal pressure in the sealed vessel. Do not continuously operate the machine for more than

one minute. If the vessel feels warm to the touch after blending, allow it to cool before attempting to detach the blade. Once the temperature has decreased, slowly and carefully untwist the blade with the opening pointed away from your body.

- Never permit any blended mixture to sit inside a sealed vessel without first releasing internal pressure.
- Do not allow blended mixtures to sit in sealed containers for long periods of time. Sugars in fruit and vegetable ingredients can ferment, releasing gases that cause pressure to build within the vessel. When this happens, ingredients may burst out of the vessel when agitated by moving or opening.

## ADDITIONAL SAFEGUARDS

- Remove and discard any packaging material or promotional labels before using the appliance for the first time.
- Do not use outdoors.
- Risk of thermal burn injury due to excessive pressure in the container. Do not blend hot liquids.
- To eliminate any potential

choking hazard for young children, remove and safely discard any protective coverings or plastic bags that the appliance or its parts may come in.

- **Do not put any NON-food items into the cup for the purpose of blending.**
- Always make sure the unit is properly and completely assembled before turning on the power and operating the appliance.
- Ensure that the areas immediately under or next to the appliance are clean and dry before operating. **Do not operate when wet.**
- Any significant spillage onto the surface under or around the appliance, or onto the appliance itself, should be cleaned and dried before continuing to use the appliance.
- A slight vibration may occur during operation of the unit. This is normal, and no cause for concern.
- This appliance is **NOT designed to be used on ice or frozen items. Do not use on frozen fruits or vegetables.**
- Remove rinds and peels of fruit and vegetable ingredients before blending.
- Do not blend stone fruit in this appliance unless pits/

seeds have been removed.

- Do not leave the appliance unattended when in use.
- Keep hands, fingers, hair, clothing, and utensils away from the appliance during operation.
- Keep the appliance clean. Refer to the **Care and Maintenance** section for tips and best practices.
- Do not attempt to repair or service this appliance. Contact customer service for assistance at: **1 (800) 523-5993.**
- If any of the contained instructions or warnings are not understood, **please contact Customer Service for assistance at: 1 (800) 523-5993.**

**! Save these instructions!**

# Contents.



- 07 What's included**
- 08 Assembly guide**
- 09 Using NutriBullet® GO**
- 11 LED light indications**
- 12 Recipes**
- 16 Care & maintenance**
  - 16 How to clean the NutriBullet® GO
  - 16 Replacement parts
- 17 NutriBullet® GO one-year limited warranty**
- 20 Warranty registration**

Thank you for purchasing the NutriBullet® GO

# What's included.



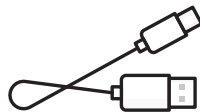
motor base/  
blade assembly



NutriBullet®  
13 oz cup



to go lid &  
lid strap



USB type-c  
cable



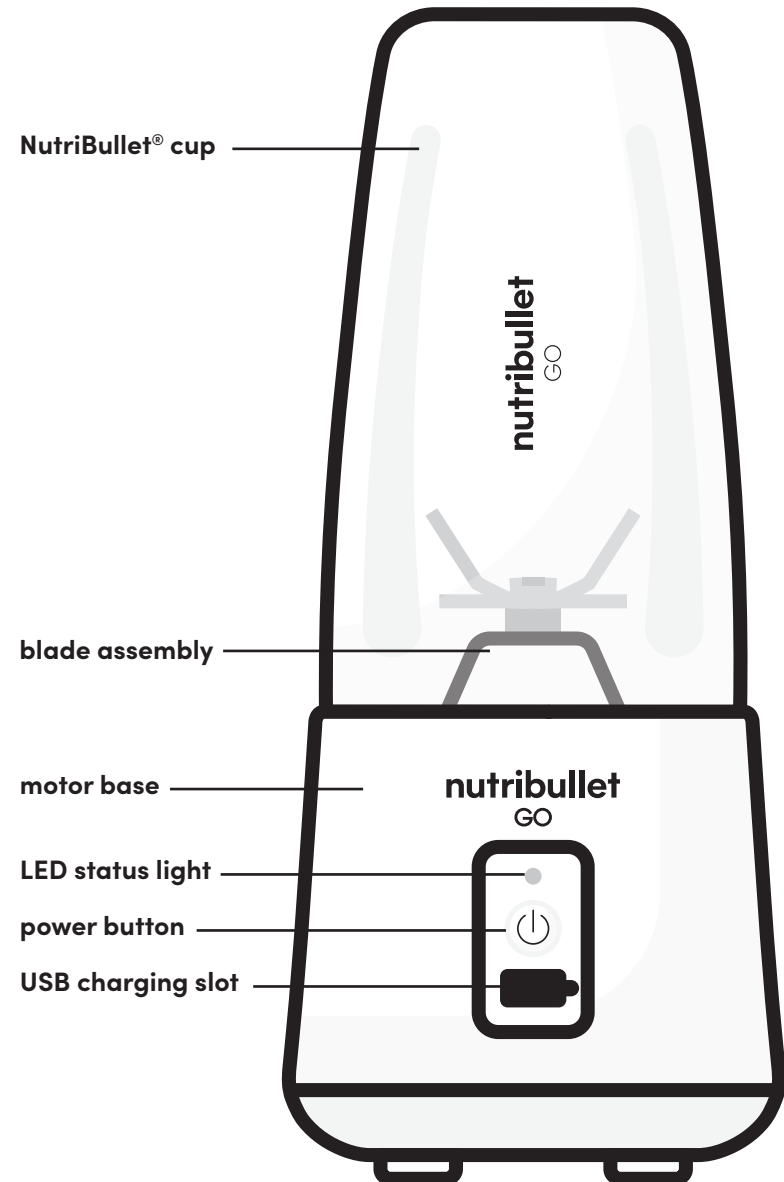
blade cover

## Before you blend: prep steps.

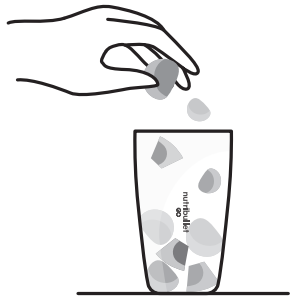
- **CLEAN UNIT** (see Care and Maintenance section).
- **CHARGE UNIT** by plugging the smaller end of the included USB cable into the slot right below the Power Button (on the front of the base) and the larger end of the cable into any powered USB slot (in a USB plug adapter plugged into a power outlet, or on a computer, etc.).
- **We recommend fully charging the unit before using it for the first time. It should take under 3 hours to fully charge.**
- **A RED LIGHT** indicates the unit is charging.
- **A BLUE LIGHT** indicates the battery is fully charged

Product configurations may vary. To see our full list of NutriBullet® GO accessories please visit [www.nutribulletgo.com](http://www.nutribulletgo.com).

# Assembly guide.

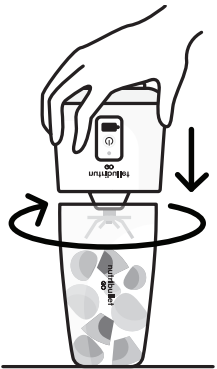


# Using the NutriBullet® GO.



- 1 Add ingredients into the NutriBullet® cup (but do not exceed the **MAX** line = 300 ml is ~10 fluid ounces). **Always leave a little room at the top of the cup for best blending results.**

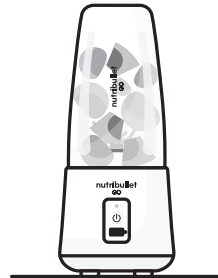
**CAUTION.** Do not put hot liquids in the blending vessel.



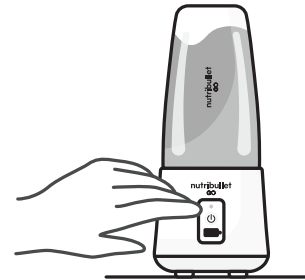
- 2 Holding the base from the bottom, flip it upside-down

and lower onto the rim of the cup. Twist the base clockwise to firmly fasten it onto the cup. **The BLUE LIGHT on the Power Button will flash five times** to indicate that the base and cup are locked, secure, and ready for blending.

**NOTE: THE CUP MUST BE LOCKED, OR THE MOTOR WILL NOT RUN.**



- 3 With the cup locked firmly in place on the base, slowly invert the blender so the base can be placed on a dry, level surface for blending.
- 4 **Press the Power Button twice to turn the motor on** and begin blending. The Blue light will remain illuminated during blending.

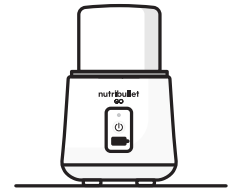


**NOTE: The Power Button will only glow blue when the base and cup are fastened and locked in place. If the Power Button is not illuminated, or if it flashes red and blue\*, keep twisting the cup onto the blade until properly secured.**

**Press the Power Button TWICE in quick succession to start the motor and begin blending. The BLUE LED light will stay illuminated throughout the duration of operation.**

- 5 Stop blending by pressing the **Power Button ONCE**. The blue LED light will turn off when the motor has powered off.

**NOTE: This unit will automatically stop blending after 30 seconds.**



**Do not operate unit for more than two consecutive cycles or continuously for over 1 minute.**

- 6 Once you have finished blending, flip the unit upside-down and twist the base counter-clockwise to remove it from the cup.
- 7 When not in use, screw the blade cover onto the base.

**NOTE: ALWAYS make sure that the unit is powered off and the blades have come to a complete stop before separating the cup from the base.**

# LED light indications.

During operation of your NutriBullet® GO, you will notice LED lights glowing **BLUE** or **RED** at various points of operation. Here is what these lights indicate. (NOTE: a lack of illumination indicates that the unit is completely powered off; the motor is not in operation, and the blades have come to a complete stop).

LED STATUS	INDICATES
RED LIGHT IS ILLUMINATED	UNIT PLUGGED IN, BATTERY IS CHARGING
BLUE LIGHT IS ILLUMINATED	UNIT PLUGGED IN, BATTERY FULLY CHARGED
FLASHING RED AND BLUE LIGHTS	CUP IS NOT FULLY LOCKED ONTO THE BASE
FLASHING BLUE LIGHT	CUP IS LOCKED IN PLACE ON BASE, AND BLENDER IS READY TO USE
BLUE LED REMAINS ILLUMINATED AFTER DOUBLE- CLICKING POWER BUTTON	BLENDER IS IN ACTIVE USE AND RUNNING NORMALLY, LAST 30 SECONDS
FLASHING BLUE LIGHT AFTER BLENDING	UNIT IS DONE BLENDING
RED LED FLASHES 10 TIMES	BLADES ARE BLOCKED BY FOOD
RED LED FLASHES FOR 30 SECONDS	LOW BATTERY, NEEDS TO BE CHARGED
RED LED FLASHES 5 TIMES	UNIT IS OVERHEATING, NEEDS TO COOL DOWN BEFORE RUNNING AGAIN

# Recipes.

## Creamy strawberry banana smoothie.

½ CUP	<b>UNSWEETENED ALMOND COCONUT BLEND MILK (OR MILK OF CHOICE)</b>
1 TBSP	<b>GREEK YOGURT</b>
3 SMALL	<b>STRAWBERRIES QUARTERED</b>
½ SMALL	<b>BANANA, SLICED</b>
½ SERVING	<b>NUTRIBULLET® VANILLA PROTEIN*</b>

Add all ingredients in the order listed and blend for the automatic 30-second cycle. If necessary, repeat the cycle for one more round to yield a smoother consistency.

## Berry green boost.

1 CUP	<b>WATER</b>
½ CUP	<b>RASPBERRIES FRESH</b>
1 SINGLE SERVE STICK	<b>NUTRIBULLET® EVERYDAY SUPERFOODS GREENS</b>

Add all ingredients in the order listed and blend for the automatic 30-second cycle. If necessary, repeat the cycle for one more round to yield a smoother consistency.

## Chocolate banana protein smoothie.

$\frac{3}{4}$  CUP **UNSWEETENED VANILLA ALMOND MILK** (OR CHOICE ALTERNATIVE)

1 **BANANA**, SLICED

1 TBSP **PEANUT BUTTER**

1 SERVING **NUTRIBULLET® CHOCOLATE PROTEIN\***

Add all ingredients in the order listed and blend for the automatic 30-second cycle. If necessary, repeat the cycle for one more round to yield a smoother consistency.

## Blueberry vanilla smoothie.

$\frac{3}{4}$  CUP **UNSWEETENED ALMOND COCONUT BLEND MILK** (OR MILK OF CHOICE)

$\frac{1}{2}$  CUP **BLUEBERRIES**

1 SERVING **NUTRIBULLET® VANILLA PROTEIN\***

Add all ingredients in the order listed and blend for the automatic 30-second cycle. If necessary, repeat the cycle for one more round to yield a smoother consistency.

## Protein-packed kiwi smoothie.

$\frac{3}{4}$  CUP **COCONUT WATER**

1 SMALL **SOFT KIWI** QUARTERED

1 SERVING **NUTRIBULLET® CHOCOLATE PROTEIN\***

Add all ingredients in the order listed and blend for the automatic 30-second cycle. If necessary, repeat the cycle for one more round to yield a smoother consistency.

## Energy-boosting smoothie.

1 CUP **UNSWEETENED ALMOND COCONUT BLEND MILK** (OR MILK OF CHOICE)

$\frac{1}{2}$  **BANANA**, SLICED

1 SINGLE SERVE STICK **NUTRIBULLET® SUPERBOOSTS ENERGY ESPRESSO**

$\frac{1}{4}$  **GROUND CINNAMON**

Add all ingredients in the order listed and blend for the automatic 30-second cycle. If necessary, repeat the cycle for one more round to yield a smoother consistency.

## Citrus detox.

$\frac{3}{4}$  CUP **GRAPEFRUIT JUICE** FRESH

$\frac{1}{2}$  SMALL **LEMON JUICE**

$\frac{1}{2}$  CUP **BLUEBERRIES**

1 SINGLE SERVE STICK **NUTRIBULLET® SUPERBOOSTS DETOX**

Add all ingredients in the order listed and blend for the automatic 30-second cycle. If necessary, repeat the cycle for one more round to yield a smoother consistency.

**\*OR ANY PROTEIN POWDER OF YOUR CHOICE**



## Fat-burning beet smoothie.

¾ CUP	<b>UNSWEETENED ALMOND COCONUT BLEND MILK (OR MILK OF CHOICE)</b>
3	<b>COOKED, SOFT &amp; CHILLED BEETS SLICED</b>
1 SINGLE SERVE STICK	<b>NUTRIBULLET® SUPERBOOSTS FAT BURN</b>

Add all ingredients in the order listed and blend for the automatic 30-second cycle. If necessary, repeat the cycle for one more round to yield a smoother consistency.

## Matcha energy smoothie.

¾ CUP	<b>UNSWEETENED VANILLA ALMOND MILK (OR CHOICE ALTERNATIVE)</b>
½ SMALL	<b>AVOCADO QUARTERED</b>
1 SINGLE SERVE STICK	<b>NUTRIBULLET® SUPERBOOSTS ENERGY MATCHA</b>

Add all ingredients in the order listed and blend for the automatic 30-second cycle. If necessary, repeat the cycle for one more round to yield a smoother consistency.

## Care & maintenance.

Cleaning and caring for your NutriBullet® GO is as simple as using it. Here are some tips and best practices that will keep your machine in top shape.

### Here's how to clean the NutriBullet®:

#### STEP 1:

**Always make sure the NutriBullet® GO is turned off after each use.**

#### STEP 2:

Hand wash the cup and lid with warm, soapy water and rinse clean.

Gently rinse the blade assembly and carefully clean with a damp sponge or cloth.


**NOTE:** Be careful not to fully submerge the motor base or run directly under water.

The NutriBullet® GO cup and lid are **NOT** dishwasher safe.

#### **WARNING**

**Always be extremely careful not to touch the blades**, as these are very sharp.

 **WARNING**  
**DO NOT PUT HOT LIQUIDS IN THE BLENDING VESSEL.**

 **WARNING**  
**NEVER SUBMERGE MOTOR BASE INTO WATER OR ANY OTHER LIQUID.**

#### STEP 3:

When not in use, store all parts of the blender together in a safe place where they will not be damaged and won't cause harm.

### Replacement parts.

To order additional parts and accessories, please visit our website at [nutribullet.com/shop/accessories](https://nutribullet.com/shop/accessories) or feel free to contact **Customer Service: 1 (800) 523-5993**.

# NutriBullet® GO

## one-year limited warranty

### LIMITED WARRANTY FOR NUTRIBULLET® GO

**The NutriBullet® limited warranty obligations are confined to the terms set forth below:**

Capital Brands Distribution, LLC and NutriBullet, LLC, (together herein "Capital Brands") then deleted the "Distribution, LLC from the remainder of the Warranty. This limited warranty is valid only in the country in which the product is purchased and comes with the product at no extra charge, however shipping and processing fees will be incurred for returns, replacements and or refunds.

If a defect exists, and Capital Brands Distribution, LLC is obligated under this limited warranty, at its option Capital Brands Distribution, LLC will (1) repair the product at no charge, using new or refurbished replacement parts, (2) exchange the product with a product that is new or that has been remanufactured

or refurbished from new or serviceable used parts and is at least functionally equivalent to the original product, or (3) refund the purchase price of the product. A replacement product assumes the remaining warranty of the original product. A repaired product has a one-year warranty from the date of repair. When a product or part is exchanged, any replacement item becomes your property and the replaced item becomes Capital Brands Distribution, LLC's property. When a refund is given, your product becomes Capital Brands Distribution, LLC's property.

### OBTAINING WARRANTY SERVICE

For limited warranty service, simply call our customer service department at 1 (800) 523-5993 or contact us via email from our website at [nutribullet.com/contact-us](mailto:nutribullet.com/contact-us); click the Contact Us link, fill out and submit the customer contact form, and we will be glad to

help you. When you contact our Customer Service Department, you will be asked to provide your name, address, telephone number, and proof of the original purchase (receipt) containing a description of the product(s), purchase date, and the appropriate NutriBullet® bar code(s). Before sending your product for limited warranty service, please make sure to keep a copy of all relevant documents for your files (receipt, etc.). It is always recommended to purchase product insurance and tracking services when sending your product for service. Remember, shipping and processing fees will be incurred and are not covered by the one-year limited warranty.

### EXCLUSIONS & LIMITATIONS

This NutriBullet® GO One-Year Limited Warranty applies only to NutriBullet® products distributed by or for Capital Brands Distribution, LLC that can be identified by the "NutriBullet® GO" trademark, trade name, logo, and bar code. The NutriBullet® GO's One-Year Limited Warranty does not apply to any other products that may appear to be authentic, but were not distributed/sold by Capital Brands Distribution, LLC.

Normal wear and tear is not covered by this limited warranty.

This limited warranty applies to consumer use only, and is void when the product is used in a commercial or institutional setting.

This limited warranty extends only to the original consumer purchaser and is not transferable. In addition, proof of purchase must be demonstrated.

Repair or replacement of the product (or, if repair or replacement is not feasible, a refund of the purchase price) is the exclusive remedy of the consumer under this limited warranty. Capital Brands Distribution, LLC shall not be liable for any incidental or consequential damages for breach of this limited warranty or any implied warranty on this product.

This limited warranty gives you specific legal rights, and you may also have other rights, which vary from state to state. Capital Brands Distribution, LLC is not liable for any damage to products not covered by this warranty (e.g., cups, book, User Guide).

This limited warranty does not apply: (a) to damage caused by accident, abuse, misuse, or misapplication; (b) to damage caused by improper maintenance (including

unauthorized parts service); (c) to a product or a part that has been modified in any way; (d) if any NutriBullet® serial number, bar code, or trademark has been removed or defaced; and/or (e) if the product has been used with an adapter/converter or (f) commercial usage of this household product.

**THIS LIMITED WARRANTY AND THE REMEDIES SET FORTH ABOVE ARE EXCLUSIVE AND IN LIEU OF ALL OTHER WARRANTIES, REMEDIES AND CONDITIONS, WHETHER ORAL OR WRITTEN, EXPRESS OR IMPLIED. CAPITAL BRANDS DISTRIBUTION, LLC SPECIFICALLY DISCLAIMS ANY AND ALL IMPLIED WARRANTIES, INCLUDING, WITHOUT LIMITATION, WARRANTIES OF MERCHANTABILITY AND FITNESS FOR A PARTICULAR PURPOSE. IF CAPITAL BRANDS DISTRIBUTION, LLC CANNOT LAWFULLY DISCLAIM IMPLIED WARRANTIES UNDER THIS LIMITED WARRANTY, ALL SUCH WARRANTIES, INCLUDING WARRANTIES**

**OF MERCHANTABILITY AND FITNESS FOR A PARTICULAR PURPOSE ARE LIMITED IN DURATION TO THE DURATION OF THIS LIMITED WARRANTY. No Capital Brands Distribution, LLC reseller, agent, or employee is authorized to make any modification to this warranty.**

Some states and provinces do not allow the exclusion or limitation of incidental or consequential damages or exclusions or limitations on the duration of implied warranties or conditions, so the above limitations or exclusions may not apply to you. This warranty gives you specific legal rights, and you may also have other rights that vary by state or province.

To reduce the risk of injury, user must read the User Manual and follow instructions. Use only with enclosed charger. Battery is not serviceable, do not open motor base.

Risk of electric shock. Dry indoor use only.

# Warranty registration.

Please visit [nutribullet.com/warranty-registration](https://nutribullet.com/warranty-registration) or call **1 (800) 523-5993** to register your new NutriBullet® GO.

You will be asked to enter the Serial Number\* of your product, along with the purchase date and place of purchase. The registration will enable us to contact you in the unlikely event of a product safety notification. By registering your product, you acknowledge that you have read and understood the instructions for use, and warnings set forth in the accompanying instructions.



To find the serial number, look under the base, on the back of the base, or on the box of the NutriBullet® GO

If you cannot find the serial number, call customer service for assistance.



**1.800.523.5993 | [nutribulletgo.com](https://nutribulletgo.com)**

Capital Brands Distribution, LLC, Los Angeles, CA 90025

[nutribulletgo.com](https://nutribulletgo.com) | All rights reserved.

NutriBullet® and the NutriBullet® logo are trademarks of CapBran Holdings, LLC registered in the U.S.A. and worldwide.

Illustrations may differ from the actual product. We are constantly striving to improve our products, therefore the specifications contained herein are subject to change without notice.

**200928\_ NB50300**